

**THE ALLIANCE FOR NEWARK PUBLIC SCHOOLS
WELCOMES YOU TO OUR TOWN HALL EVENT!**

**THE
COMMUNITY
REPORT
CARD**

A blue square icon representing a clipboard. At the top is a white clip. Below it is a white checklist with three items, each consisting of a square box with a checkmark and a star to its right. A white hand with the index finger pointing is positioned to the right of the second item, as if highlighting it.

**WE WILL BEGIN THE
PRESENTATION SHORTLY!**

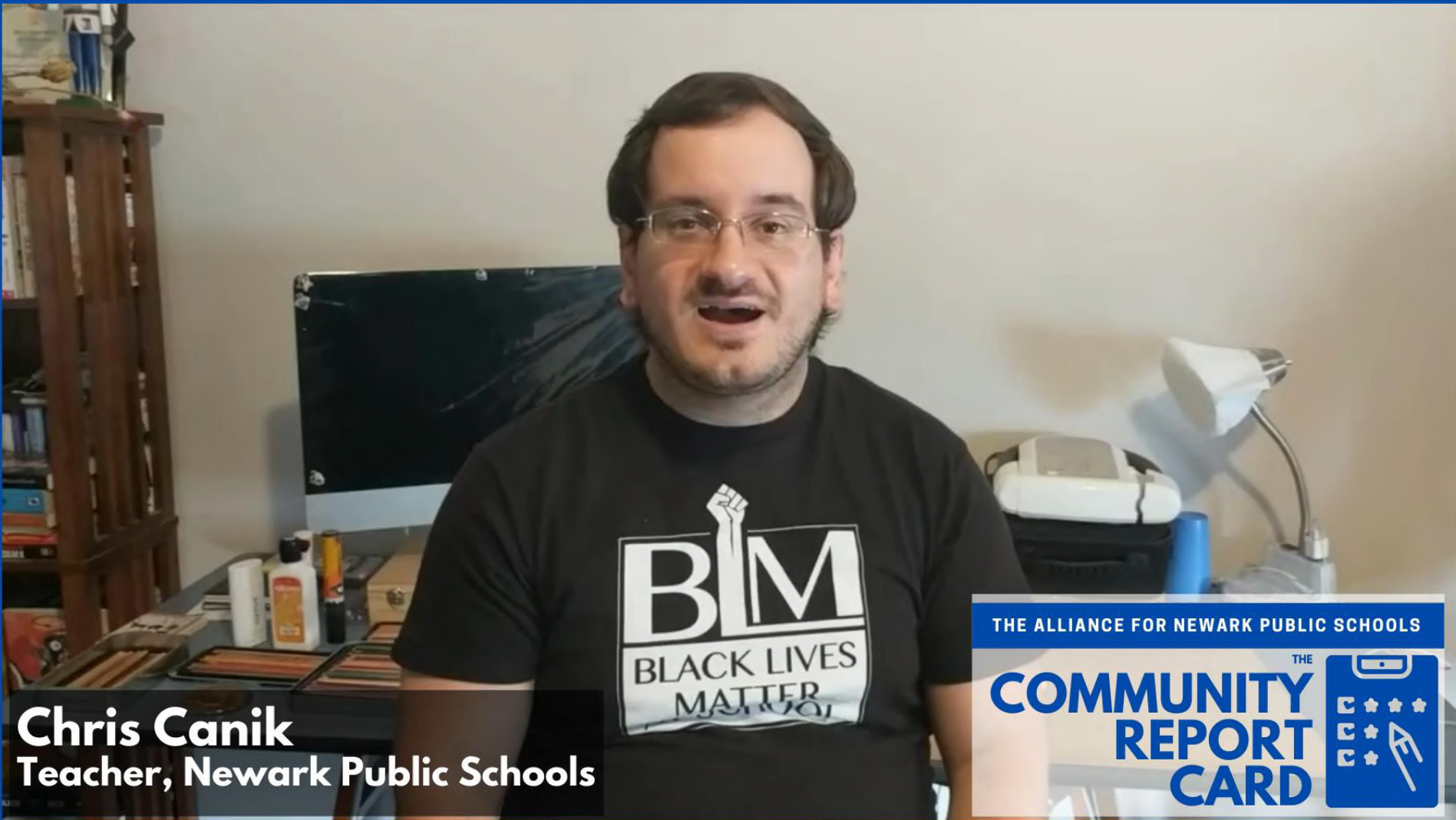


THE ALLIANCE FOR NEWARK PUBLIC SCHOOLS

THE
COMMUNITY
REPORT
CARD



TEACHERS
SAID...



Chris Canik
Teacher, Newark Public Schools

THE ALLIANCE FOR NEWARK PUBLIC SCHOOLS

THE
**COMMUNITY
REPORT
CARD**



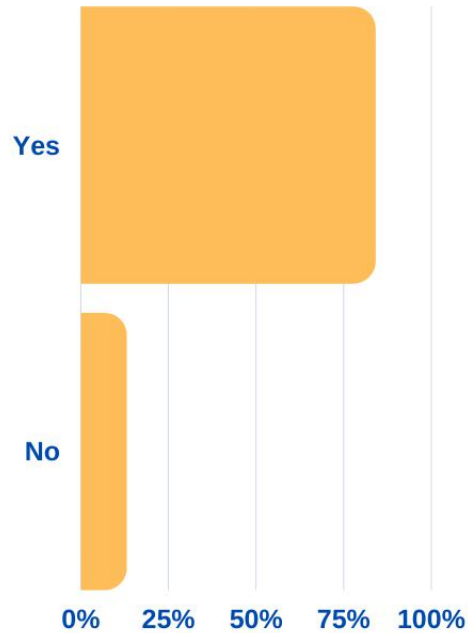
THE ALLIANCE FOR NEWARK PUBLIC SCHOOLS



EDUCATORS SAID...

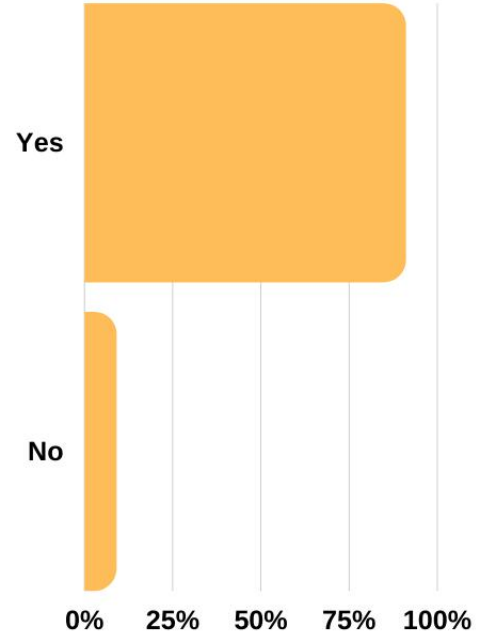
Do you feel you have the resources needed to assist your child with online/remote learning?

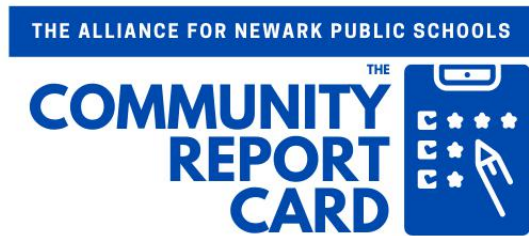
86%
said yes



Do you feel you have been provided guidance from the district or your child's school with at-home supports?

91%
said yes





EDUCATORS SAID...

"The other challenge that I faced was technology. Granted my students had access to chromebooks and Ipads, many of the tools we as teachers were asked to use (Edpuzzle, Lexia, Nearpod) were often blocked on the chromebooks and it caused confusion for students and parents."

"Too many different technology platforms are beings used at the same time with a lack of access or training for students and their families members. Often directives are overwhelming due to inadequate planning."



EDUCATORS SAID...

"The biggest challenge is accommodating the curriculum for my special needs students in a way that builds on each student's strengths.

Knowing...how best to "chunk" the curriculum at every grade level, while maintaining the rigor needed to help students perform at their highest ability. Establishing a forum consisting of special educators throughout the district would be a great way to share best practices."

THE ALLIANCE FOR NEWARK PUBLIC SCHOOLS

THE
COMMUNITY
REPORT
CARD



PARENTS
SAID...

Anfal Jenkins
Parent, Newark Public Schools

THE ALLIANCE FOR NEWARK PUBLIC SCHOOLS



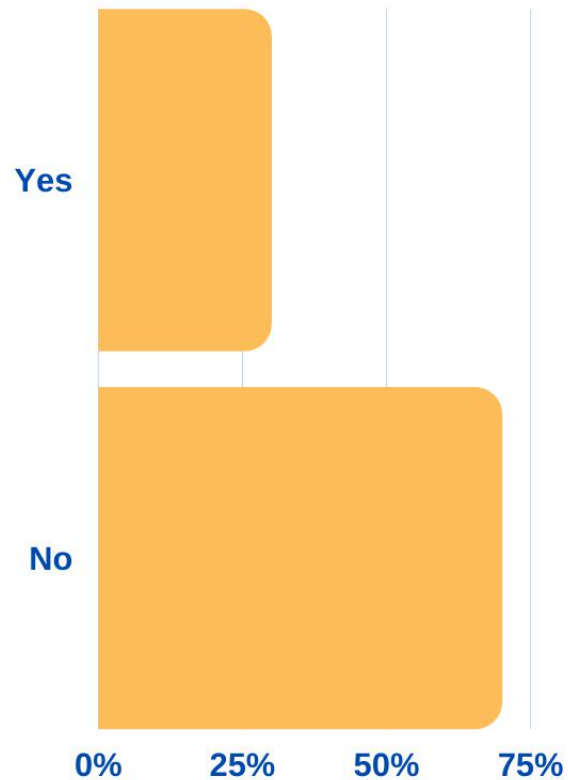
THE ALLIANCE FOR NEWARK PUBLIC SCHOOLS



PARENTS SAID...

Do you feel your child and/ or family could benefit from counseling based on the COVID-19 experience?

30%
said yes

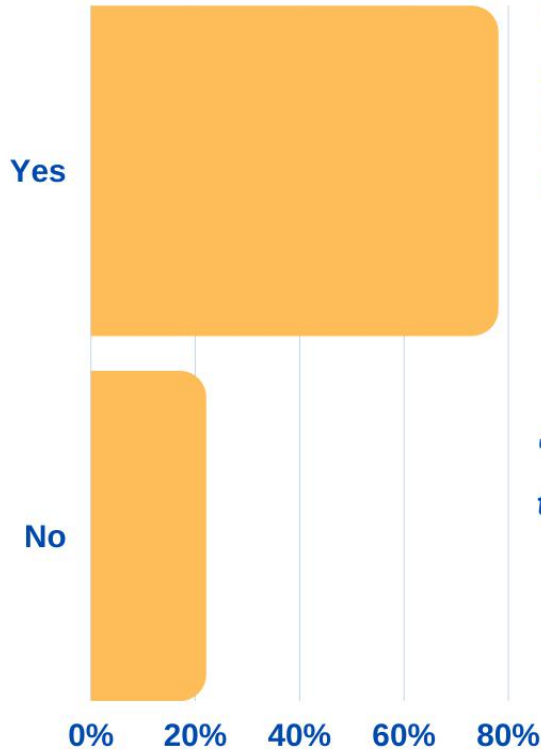




PARENTS SAID...

Do you feel you have the resources needed to assist your child with online/remote learning?

**25%
said no**



"I want to be able to help with the work if he needs. Like during reading portions. Or technical difficulties which happens often when working with unreliable internet access."

"Too many apps, the chromebooks given are broken up. They only allowed 1 per family, I have multiple children."

"The internet service I couldn't connect to I had to use the hotspot off of my phone."

"I need a chrome book for each of my sons. They were primarily working with cell phones and then we borrowed a chrome book for them to share."

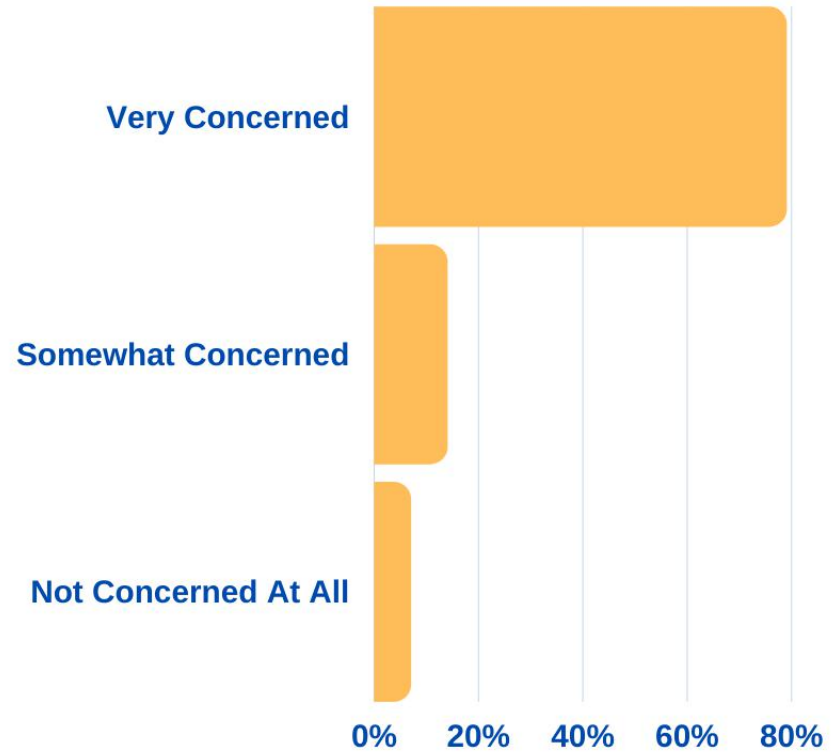
THE ALLIANCE FOR NEWARK PUBLIC SCHOOLS



PARENTS SAID...

Are you concerned that class size will impact the ability for students and teachers to social distance when schools re-open in September?

79%
are very concerned

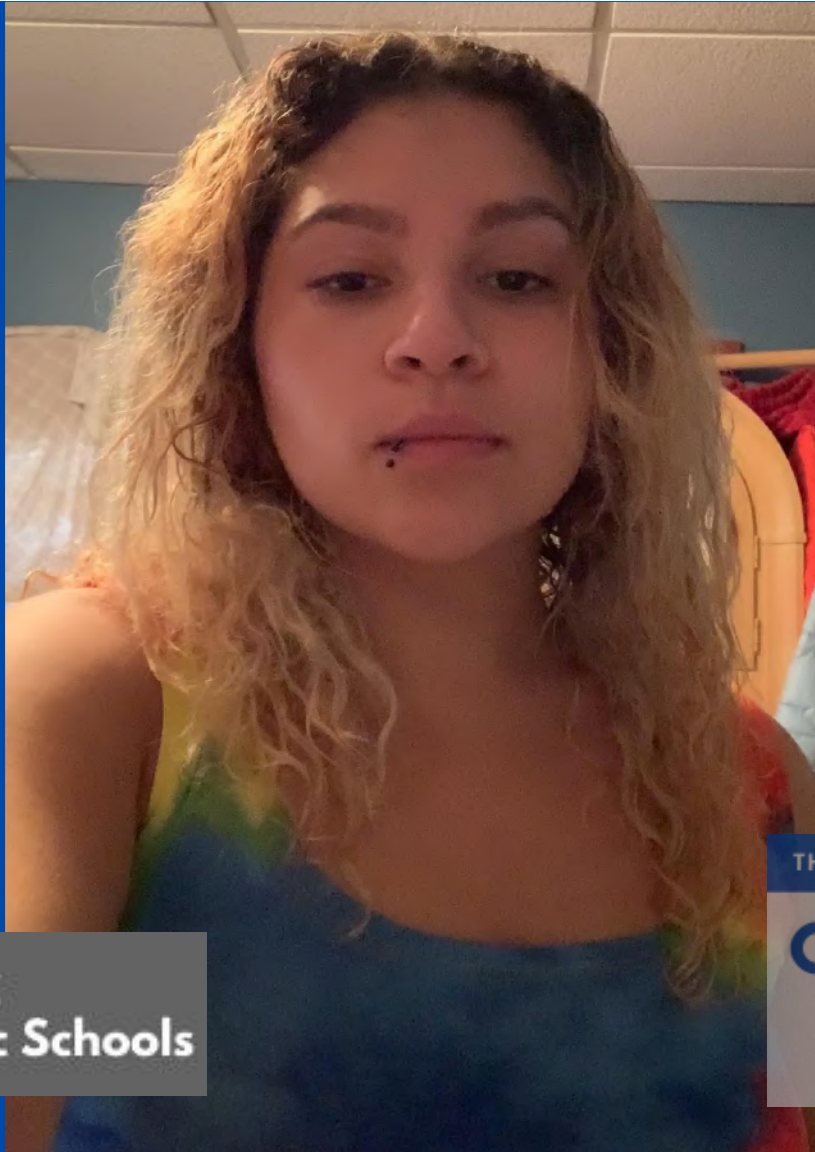


THE ALLIANCE FOR NEWARK PUBLIC SCHOOLS

THE
COMMUNITY
REPORT
CARD



STUDENTS
SAID...



Ayanna Gonzalez
Student, Newark Public Schools

THE ALLIANCE FOR NEWARK PUBLIC SCHOOLS





Steven Hadley
Student, Newark Public Schools

THE ALLIANCE FOR NEWARK PUBLIC SCHOOLS

THE
**COMMUNITY
REPORT
CARD**



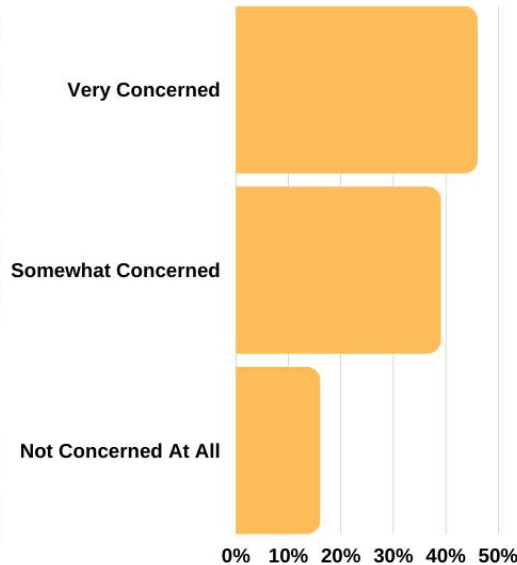
THE ALLIANCE FOR NEWARK PUBLIC SCHOOLS



STUDENTS SAID...

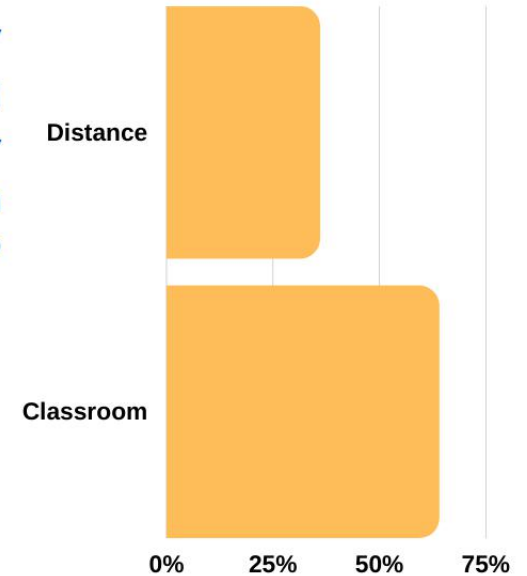
Are you concerned that class size will impact the ability for students and teachers to social distance when schools re-open in September?

46%
are very concerned



Do you prefer distance learning or do you prefer classroom instruction?

64%
said classroom



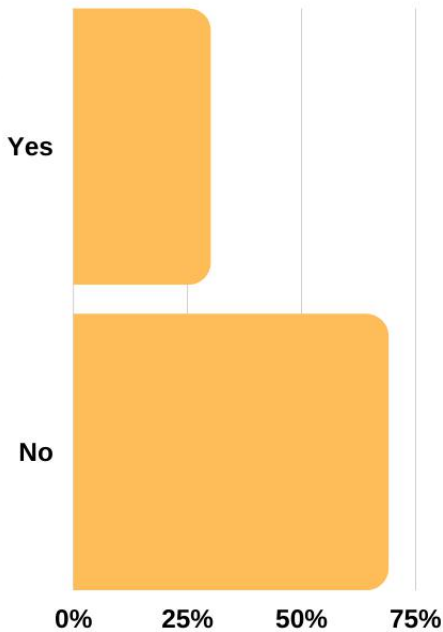
THE ALLIANCE FOR NEWARK PUBLIC SCHOOLS



STUDENTS SAID...

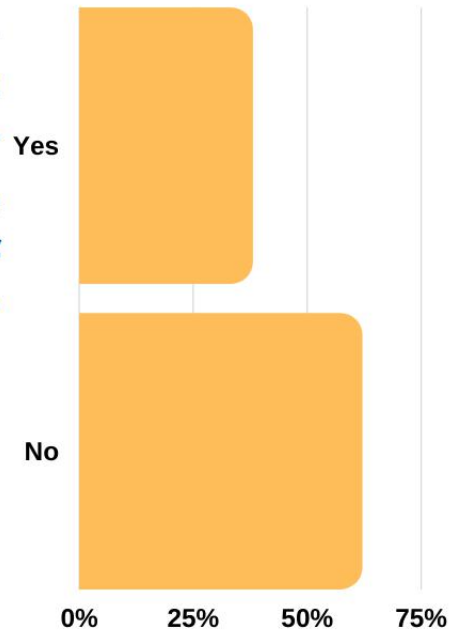
Do you feel your child and/ or family could benefit from counseling based on the COVID-19 experience?

30%
said yes



Has accessing healthy, nutritious food been a challenge for your children during the COVID-19 State of Emergency?

38%
said yes



THE ALLIANCE FOR NEWARK PUBLIC SCHOOLS

THE
COMMUNITY
REPORT
CARD



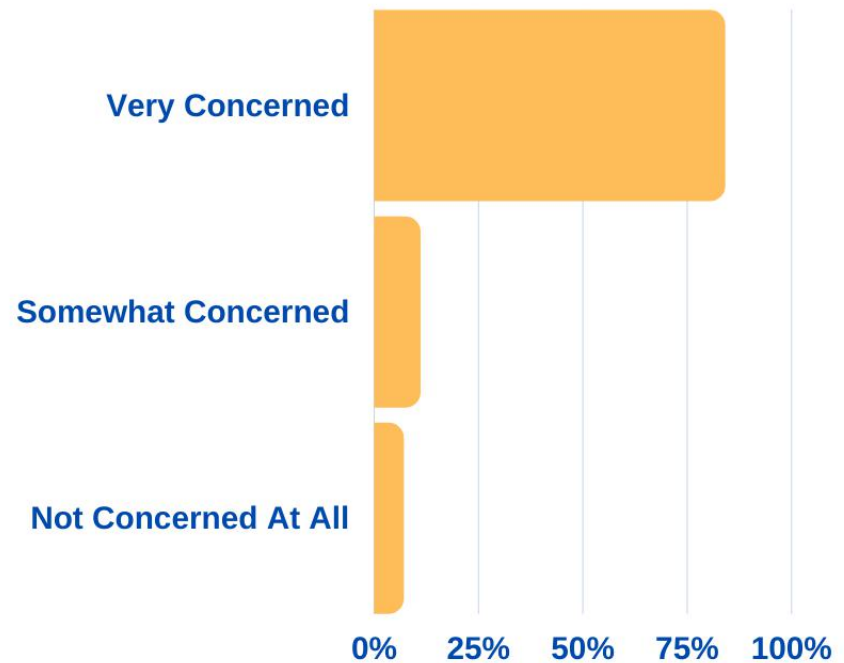
FAMILIES WITH SPECIAL
NEEDS CHILDREN
SAID...



FAMILIES WITH SPECIAL NEEDS CHILDREN SAID...

**Are you concerned that class
size will impact the ability
for students and teachers to
social distance when schools
re-open in September?**

84%
are very concerned

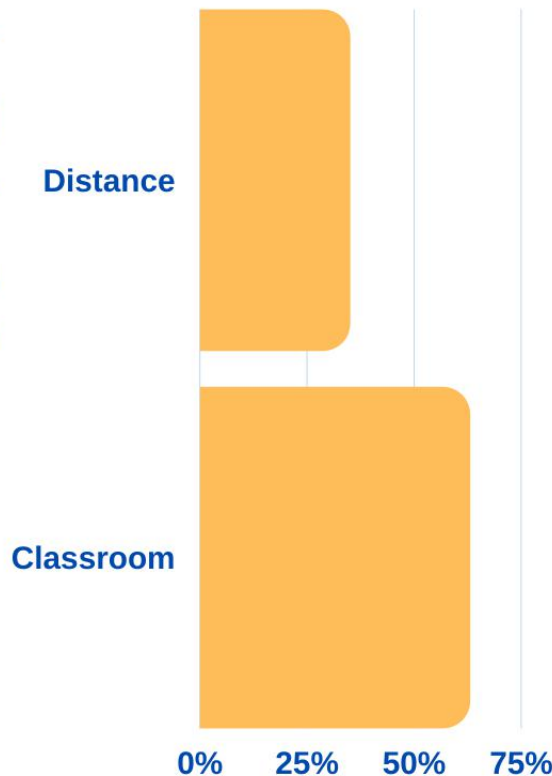




FAMILIES WITH SPECIAL NEEDS CHILDREN SAID...

**Do you prefer
distance learning
or do you prefer
classroom
instruction?**

63%
**said
classroom**



"Children have a hard time focusing with all the different screens open. Classroom learning is extremely important and necessary, especially for parents that work."

"Some parents don't have the resources, patience, or time to teach properly."

"A lot of parents and students are not equipped, especially a family that has a child with special needs. Some parents are not educators and students are falling behind."

"Teachers are the experts parents can't answer questions students have."

THE ALLIANCE FOR NEWARK PUBLIC SCHOOLS

THE
COMMUNITY
REPORT
CARD

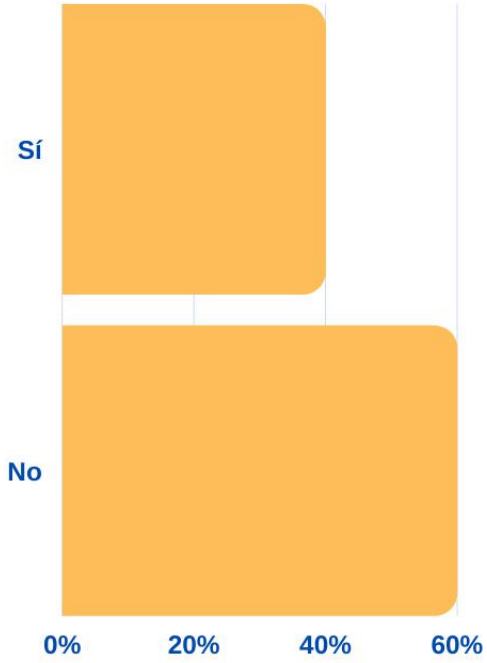


SPANISH SPEAKING
FAMILIES
SAID...

SPANISH SPEAKING FAMILIES SAID...

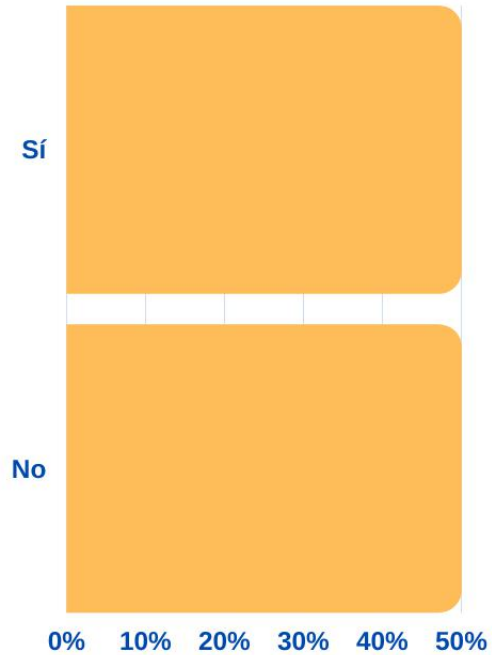
¿Usted siente que su hijo y/o familia podrían beneficiarse de asesoramiento basado en la experiencia del COVID-19?

40%
dijo que sí



¿Ha sido para usted un reto el acceso de alimentos saludables y nutritivos para sus hijos durante el estado de emergencia del COVID-19?

50%
dijo que sí



THE ALLIANCE FOR NEWARK PUBLIC SCHOOLS

THE
COMMUNITY
REPORT
CARD

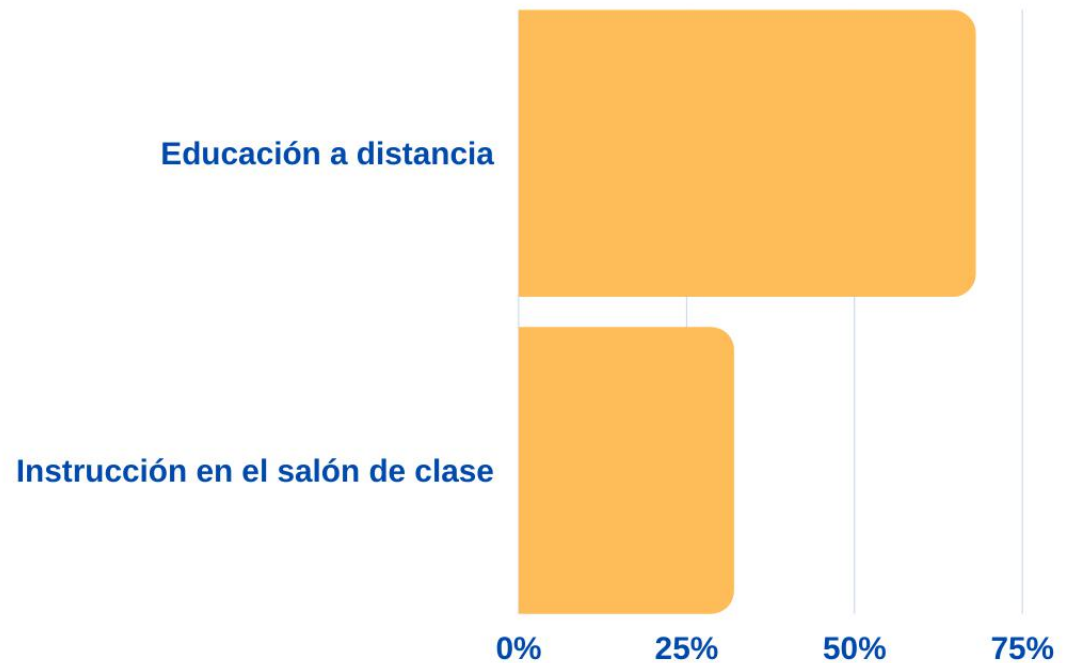


SPANISH SPEAKING FAMILIES SAID...

¿Usted prefiere la
educación a distancia o
prefiere la instrucción
en el salón de clase?

68%

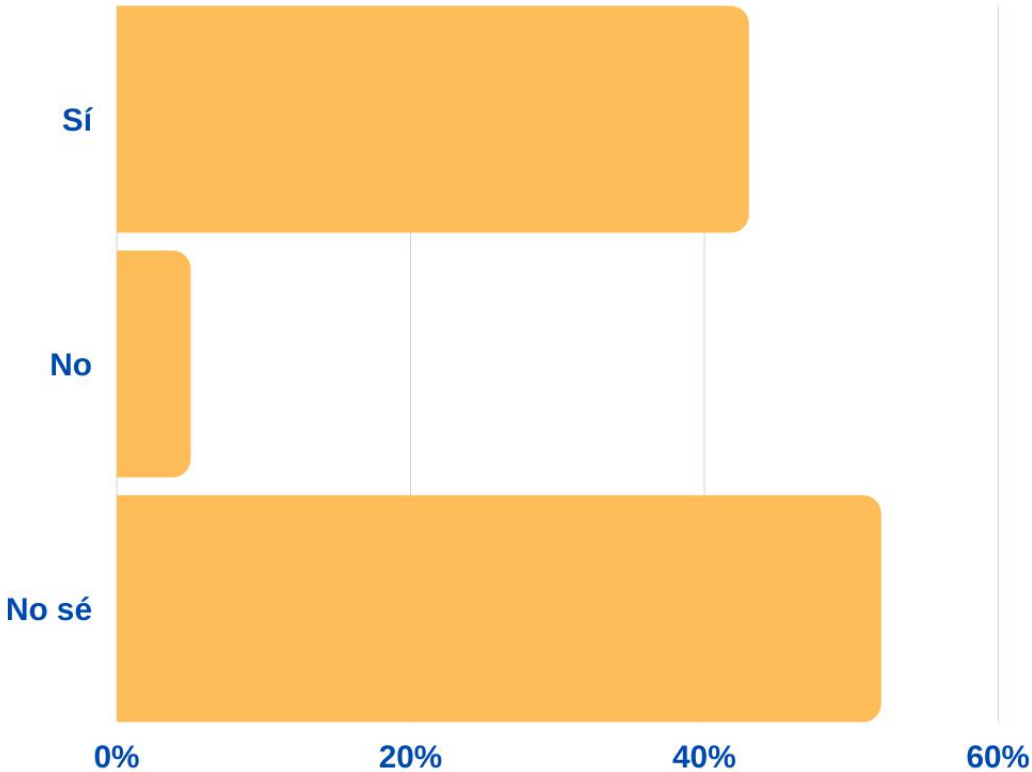
Instrucción en el salón de clase



SPANISH SPEAKING FAMILIES SAID...

¿Usted apoya la expansión de una escuela comunitaria de barrio como una forma de abordar un programa de instrucción sólido, oportunidades de aprendizaje ampliadas, una variedad completa de servicios de salud, salud mental y servicios sociales durante el estado de emergencia del COVID-19?

52%
No sé



THE ALLIANCE FOR NEWARK PUBLIC SCHOOLS

**THE
COMMUNITY
REPORT
CARD**



THE ALLIANCE FOR NEWARK PUBLIC SCHOOLS

THE
**COMMUNITY
REPORT
CARD**



THE GRADES

FOR NEWARK PUBLIC SCHOOLS RESPONSE
TO THE COVID-19 STATE OF EMERGENCY

SUBJECT

GRADE

How would you grade your experience with Newark Public Schools handling of remote learning and distance education during the COVID-19 State of Emergency?

B+

How would you grade the quality of instruction provided through remote learning and distance education?

B+

How would you grade accessibility to user-friendly technology to support distance education and remote learning, including WiFi?

B+

How would you grade the quality of communication between teachers, students, parents, and the school district?

A-

How would you grade student engagement in curriculum & academic growth?

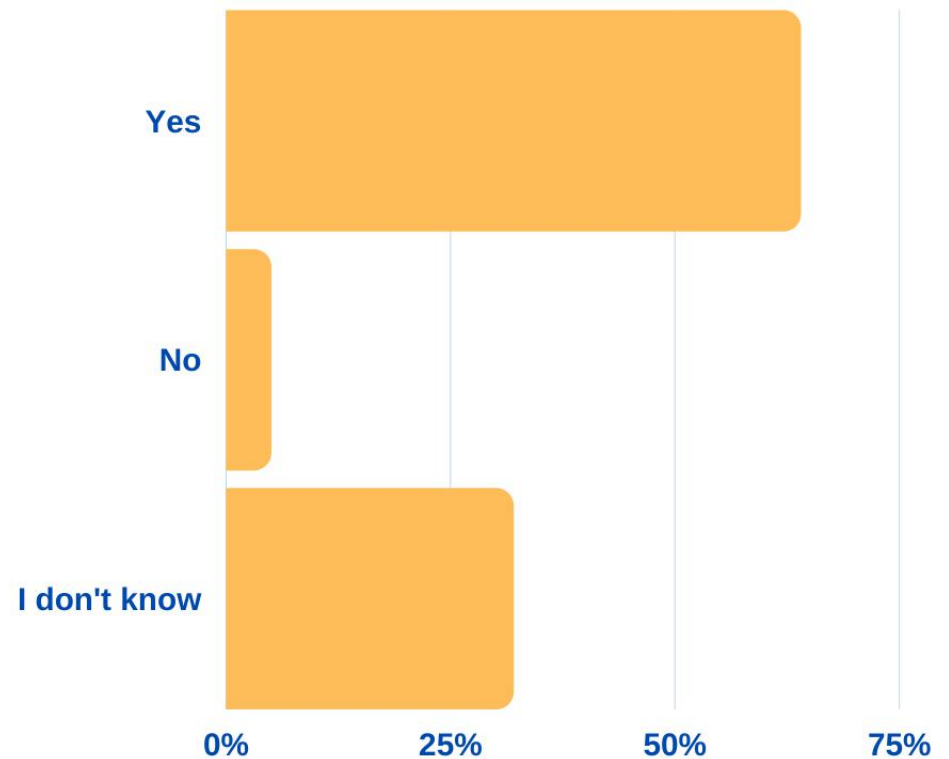
B



A MAJORITY OF SURVEY RESPONDENTS FAVOR COMMUNITY SCHOOLS

Do you support the expansion of a neighborhood community school as a way to address a strong core instructional program, expanded learning opportunities, a full range of health, mental health, and social services during the COVID-19 state of emergency?

64%
support expansion of
community schools



THE ALLIANCE FOR NEWARK PUBLIC SCHOOLS



To access the full survey results, watch the recording of this town hall event, sign up for emails from the alliance, or follow us on facebook, please visit:



@Alliance4NPS

www.facebook.com/Alliance4NPS



Alliance4NPS@gmail.com



www.UnitedNJ.org/Alliance4NPS