

School Advisory Board Update

October 27, 2014

ENTEROVIRUS D68:

NPS Information & Response



Enterovirus D68: NPS Information & Response

- ▶ **Information:** School nurses were provided with timely and factual information from reliable sources:
 - ▶ The Center for Disease Control (CDC)
 - ▶ <http://www.cdc.gov/non-polio-enterovirus/outbreaks/EV-D68-outbreaks.html>
 - ▶ New Jersey Department of Health
 - ▶ <http://www.nj.gov/health/cd/ev-d60/index.shtml>
- ▶ **Response:** The Office of Health Services sought information and direction from the Epidemiologists at the Newark Department of Health and Community Wellness

Detailed Message to Nurses

- ▶ School nurses were provided with specific information to address all students and those with specific needs:
 - ▶ While the enterovirus D68 has been diagnosed in New Jersey it is not yet widespread. However to keep all members of the school community informed, please post hand washing bulletins throughout the school, in the bathrooms and hallways. Please post the enterovirus D68 information sheet wherever parents and students gather or enter the school.
 - ▶ It is important that school nurses teach all staff and students about the need to do proper hand washing and covering a cough or sneeze properly.
 - ▶ Please note, **hand sanitizer is not effective against an enterovirus.** Only hand washing is effective.
 - ▶ Students with pre-existing asthma or autoimmune disease should be watched carefully for any sign of a persistent wheeze or cough. Any student presenting with these symptoms should be referred to immediate care or emergency services. This virus does not always present with a fever, therefore the absence of fever does not rule out an infection by enterovirus D68.
 - ▶ More information will be provided as it becomes available from the Newark Department of Health and Community Wellness.
 - ▶ Please inform the Office of Health Services if there is a sudden rise in absences.
 - ▶ Please share this information with your school administration.

Education

- ▶ School nurses were advised to teach and reinforce these concepts with students as needed:
 - ▶ Hand washing with soap and water
 - ▶ Respiratory Precautions
- ▶ Posters were provided to reinforce the Health Education

Stop Germs! Stay Healthy! Wash Your Hands

Keeping hands clean is one of the most important things we can do to stop the spread of germs and stay healthy.



For more details on handwashing, visit CDC's Handwashing Website at www.cdc.gov/handwashing

When?

- Before, during, and after preparing food
- Before eating food
- Before and after caring for someone who is sick
- Before and after treating a cut or wound
- After using the toilet
- After changing diapers or cleaning up a child who has used the toilet
- After blowing your nose, coughing, or sneezing
- After touching an animal, animal feed, or animal waste
- After handling pet food or pet treats
- After touching garbage

How?

- Wet your hands with clean, running water (warm or cold), turn off the tap, and apply soap.
- Lather your hands by rubbing them together with the soap. Be sure to lather the backs of your hands, between your fingers, and under your nails.
- Scrub your hands for at least 20 seconds. Need a timer? Hum the "Happy Birthday" song from beginning to end twice.
- Rinse your hands well under clean, running water.
- Dry your hands using a clean towel or air dry them.



U.S. Department of Health and Human Services
Centers for Disease Control and Prevention

C124564-A

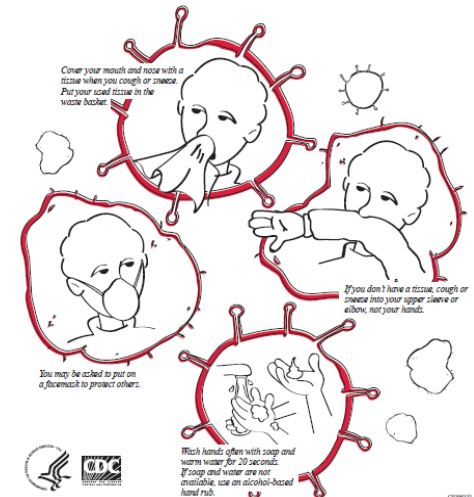
Keep Your Child from Getting and Spreading ENTEROVIRUS D68

- Avoid close contact with sick people**
- Wash your hands often with soap & water**
- Cover your coughs & sneezes**
- Clean & disinfect surfaces**
- Avoid touching your face with unwashed hands**
- Stay home when you're sick**

www.cdc.gov/non-polio-enterovirus/EV68/

Cover your Cough

Stop the spread of germs that can make you and others sick!



C124564-B

Flu Vaccines

- ▶ Provided at all school sites which have a school based clinic. Several other schools will receive flu shots from the Healthcare vans assigned to the Newark Public Schools.
- ▶ Jewish Renaissance will be providing flu shots for employees at 2 Cedar St.
- ▶ The Newark Department of Health and Community Wellness will be providing flu shots at their clinic.

S

System-wide Accountability

Standard approaches to tracking student, school, and system success and progress across all schools.

U

Universal Enrollment

Universal Enrollment is straightforward, user-friendly and empowers our students & families to choose the school experience that best meets the student's needs and preferences.

C

Citywide Facilities and Technology Plan

Bold, inspirational, and participatory plan to operationalize the "21st century learning environments for all students" piece of One Newark vision.

C

Common Core Mastery and PARCC Readiness

Lead the nation in the number of students living below the poverty level making progress towards Common Core mastery and PARCC readiness, especially those who are too often left behind.

E

Equity and Access for All Students

Increase the number of high quality seats for all students – particularly those too often left behind.

S

Shared Vision for Excellent Schools

Embed the demand for 100 excellent schools and the groundswell of support for the changes necessary to get there.

S

Systemic Conditions for Success

Radically transform NPS to ensure it is a high performing organization for years to come.

SYSTEM-WIDE ACCOUNTABILITY:

Assessment Data Available

New Jersey Assessment of Skills and Knowledge (NJASK)
High School Proficiency Assessment (HSPA)
American College Test (ACT)

K-8: NJ ASK Changes & Important Dates

Changes to the NJ ASK:

- Raises expectations of New Jersey students by measuring a selection of the Common Core State Standards within the current NJ ASK blueprint.
- Specific shifts in Mathematics and English Language Arts (ELA):
 - Math: Shifts appear in new content per grade level
 - ELA: Shifts are more subtle because the NJ ASK blueprint more closely matched Common Core State Standards
- Utilizes questions that were “field tested” in 2012-2013.

Important Dates:

Data	Importance	Release Date
State NJASK Trends and Comparative Districts	<ul style="list-style-type: none">• Trend data is difficult to interpret without the context provided by Statewide comparisons.• Comparisons to districts with similar demographics allows NPS to better understand performance relative to similar districts.	November 2014
Student Growth Percentile (SGP)	<ul style="list-style-type: none">• Growth data will allow NPS to assess the performance of students relative to those with similar assessment results in previous years.	December 2014

K-8: NJ ASK Methodology

Data	State Methodology	NPS Methodology
Student Assignment to Schools	<ul style="list-style-type: none"> • Test scores are attributed to schools, based on student enrollment on the actual date of the exam 	<ul style="list-style-type: none"> • Only includes test scores of students enrolled in an NPS School on October 15. • Students are matched to specific schools based on their October 15th enrollment • Only students who take the test on test day are included in the denominator
Demographics	<ul style="list-style-type: none"> • Results are presented for students by the following demographic subgroups: <ul style="list-style-type: none"> • General education • Special education • Limited English proficient (LEP) • Gender • Ethnicity • Economic status 	<ul style="list-style-type: none"> • NPS analyzes test scores for all demographic groups, and then places schools into one of three needs groups: <ul style="list-style-type: none"> • Low need • Medium need • High need • This approach allows for schools with similar student populations to be compared

High School: HSPA Important Dates

Important Dates:

Data	Importance	Release Date
HSPA Pass Rates	<ul style="list-style-type: none">• Pass rates provide information on proficiency levels for both Math and Language Arts Literacy at a school	Available
HSPA Graduation Rates	<ul style="list-style-type: none">• HSPA Graduate Rates provide information on the percentage of students at a school who:<ul style="list-style-type: none">• Passed both the NJ HSPA Language Arts Literacy and Math exams• Graduated	December 2014

High School: HSPA & ACT Methodology

HSPA

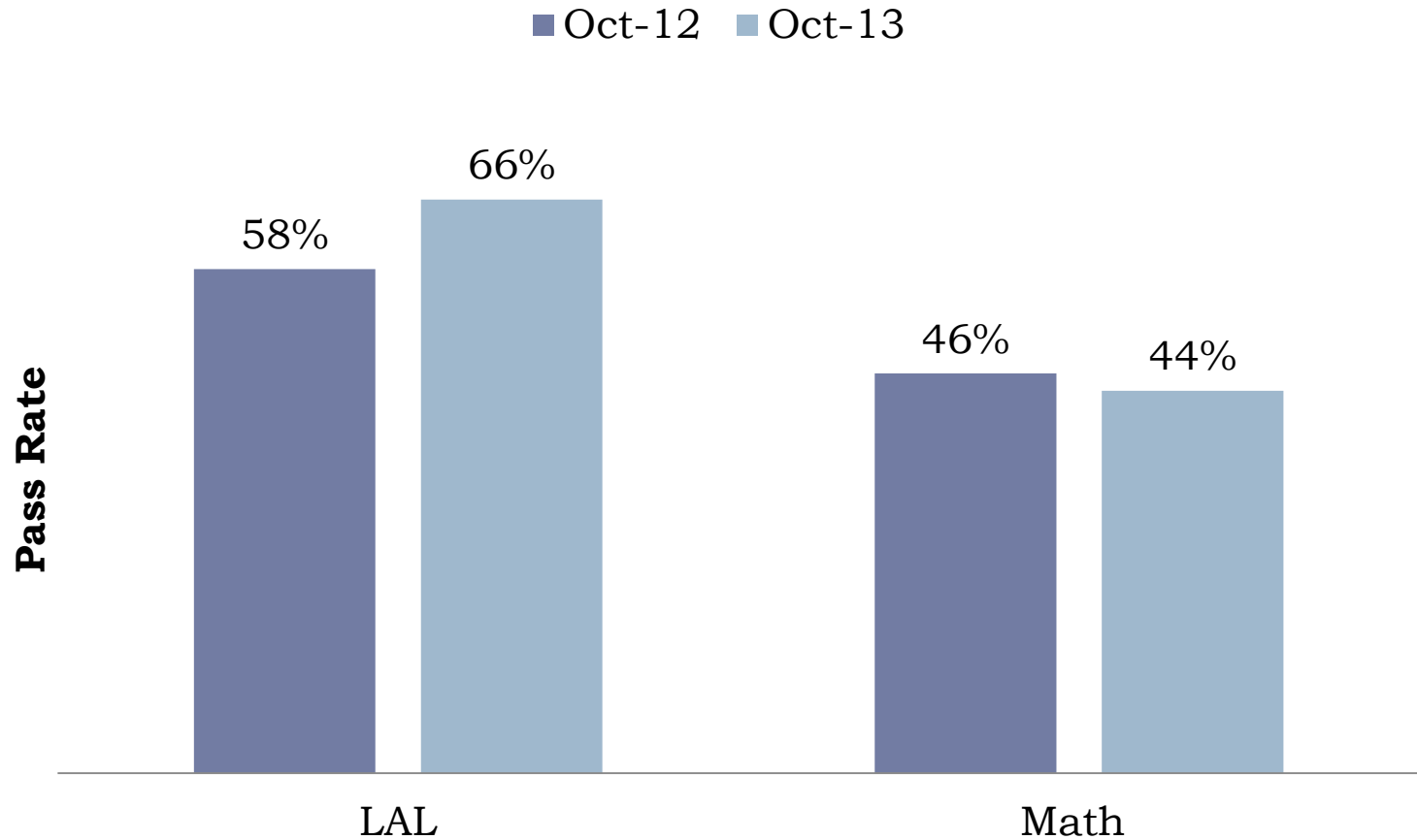
Data	State Methodology	NPS Methodology
Student Assignment to Schools	<ul style="list-style-type: none"> Test scores are attributed to schools, based on student enrollment on the actual date of the exam 	<ul style="list-style-type: none"> Only includes test scores of students enrolled in an NPS School on October 15th Students are matched to specific schools based on their October 15th enrollment All students enrolled in the school, not just those who took the test, are included in the denominator

ACT

Data	State Methodology	NPS Methodology
Student Assignment to Schools	<ul style="list-style-type: none"> State does not analyze ACT data 	<ul style="list-style-type: none"> Only includes test scores of students enrolled in an NPS School on October 15th Students are matched to specific schools based on their October 15th enrollment

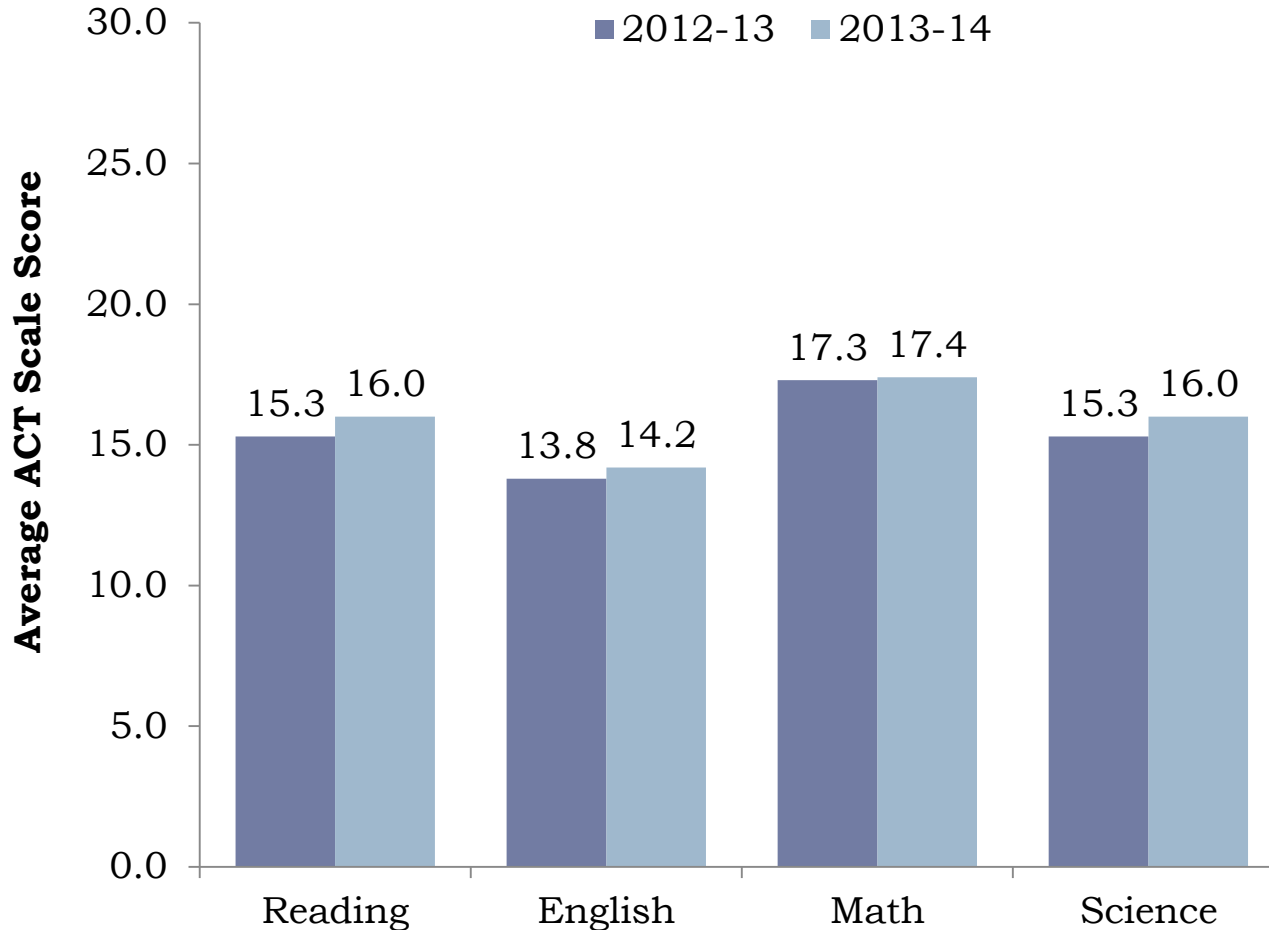
HSPA: Language Arts Literacy & Math Proficiency

Grade 11 HSPA Pass Rate Comparison



ACT: Reading & Math Proficiency

ACT Grade 11 Scale Scores



SYSTEM-WIDE ACCOUNTABILITY:

Enrollment Data Audit
Process



Enrollment Data Audit Process

Process	Description	Date
Internal Data	<ul style="list-style-type: none"> NPS carries out an internal audit to identify students not attending district schools. This process requires that NPS staff members: <ul style="list-style-type: none"> Contact families to confirm a child's enrollment Confirm a student's absence of 10 or more consecutive days prior to deactivation Ensure that students who meet the above mentioned criteria deactivated from NPS systems NPS central office teams conduct school visits to (1) visually audit the number of students by classroom, (2) ensure there are clear processes in place for taking attendance, and (3) confirm all classroom teachers have set up their electronic grade books 	September - Late October
State Data Validation Process	<ul style="list-style-type: none"> The State begins its data validation period mid-October to validate data submitted by Local Education Agencies, in order to ensure accuracy 	Mid October
NPS Presents Final Enrollment Data	<ul style="list-style-type: none"> Final enrollment data are analyzed and presented to the Board 	December 2014

SYSTEMIC CONDITIONS FOR SUCCESS:

District Improvement Plan

New Jersey Quality Single Accountability
Continuum (NJQSAC)



Summary: 2013 NJQSAC Interim Review Findings

Program and Instruction:

- ▶ Did not earn points on 7 indicators because the District's World Languages curriculum was in draft form.
- ▶ Did not earn points on student achievement indicators for literacy and math.
- ▶ Did not earn points on the graduation rate indicator.

District Improvement Plan Response

- ▶ **Final World Languages curriculum approved by the Board November 2013 and submitted during 2014 QSAC Review.**

- ▶ **Plan to increase student achievement through:**
 - ▶ Improved implementation of rigorous, Common Core-aligned curricular resources through the development of yearlong instructional plans for all teachers of literacy and math
 - ▶ Enhanced professional development offerings for teachers and administrators focused on helping teacher teams improve their planning

- ▶ **Plan to increase graduation rate through:**
 - ▶ HS curricular resource adoptions in math and literacy
 - ▶ Creation of Acceleration Academies
 - ▶ New online course offerings

SYSTEMIC CONDITIONS FOR SUCCESS:

Electronic Board Materials
Solution



Electronic Board Materials Initiative

Initiative under Consideration:

Transition of board meeting materials and management to an electronic platform

Over-Arching Purpose:

The over-arching purpose of transition to an electronic platform is to:

- 1) Decrease cost of materials preparation and distribution
 - Decrease printing costs
 - Decrease courier costs
 - Decrease staff time spent preparing materials
- 2) Increase efficiency of delivery to Board and Committee Members
 - Increase the amount of time Board and Committee members have to review all materials prior to meetings
- 3) Increase the accessibility of materials to the community
 - Allow for more immediate sharing of:
 - Agenda
 - Minutes
 - Approved Resolutions
 - Meeting Video

Electronic Board Materials Initiative

Vendors Under Consideration:

Vendor	SchoolBoardNet (NJSBA)		BoardDocs		Electronic School Board		
Package	Basic	Premium	LT	Pro	Basic	Premium	Premium +
Annual Cost	\$3,820*	\$4,860*	\$3,000	\$12,000	\$2,500	\$6,000	\$10,500
Vendor Pros	<ul style="list-style-type: none"> NJBSA currently holds & advises us on our policies Simplest and most cost-efficient platform Local provider 	<ul style="list-style-type: none"> Most established, and experienced in working with Public School Districts Most visually-appealing interface 	<ul style="list-style-type: none"> Ability to purchase the tool at 2.5X annual fee (\$26,250) Flexible "Premium" option which allows for customization beyond basic, but with fewer features than Premium + 				
Vendor Cons	<ul style="list-style-type: none"> Most limited tools 	<ul style="list-style-type: none"> Most costly vendor 	<ul style="list-style-type: none"> Newer company with less experience working with public school districts 				

Next Steps:

- ▶ Evaluate each vendor and the specific packages
- ▶ Vote at November Regular meeting

**These costs include the cost of hosting our policies with NJSBA, as transition to the other schools would require that we move our policies to those platforms. Costs without policy hosting are : \$1,320 for Basic and \$2,360 for Premium*