

1. Which of the following time signatures is considered to be a triple compound meter? (2 pts.)

- a. $\frac{3}{8}$ b. $\frac{3}{4}$ c. $\frac{9}{8}$ d. $\frac{6}{8}$

2. Divide the following example into measures by placing barlines in the appropriate places. (3 pts.)



3. How many sixteenth notes equal a dotted half note? (2 pts.)

- a. 10 b. 12 c. 14 d. 16 e. 18

4. Rewrite the following rhythm, with correct rhythmic groupings (beaming), in 6-8-meter. (4 pts.)



5. List the correct order, **from slowest to fastest**, of these tempos (2 pts.):

1 = Lento 2 = Allegro 3 = Moderato 4 = Adagio

____, _____, _____, and _____.

For questions 6-13, write the following key signatures (1 pt. each):



6. F Major



7. C Major



8. g minor



9. f minor



10. Eb Major



11. f# minor



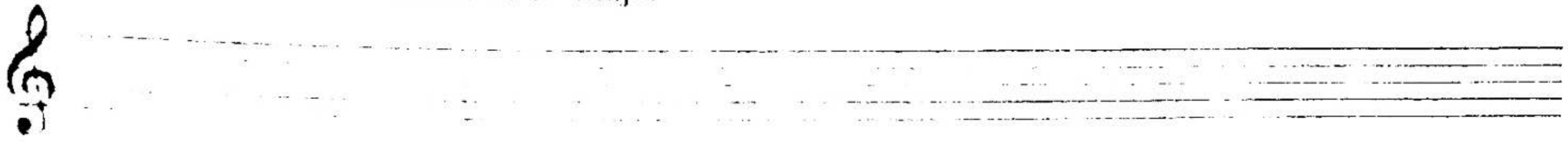
12. e minor



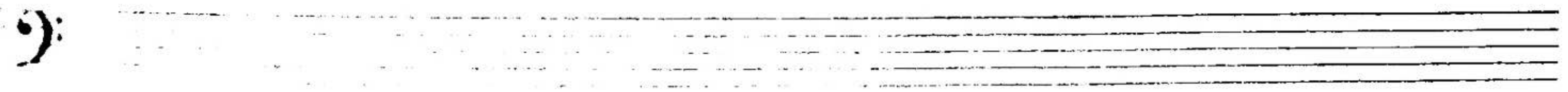
13. A Major

For questions 14-16, write the following ASCENDING scales. Use accidentals, not key signatures. (1 pt. for each scale)

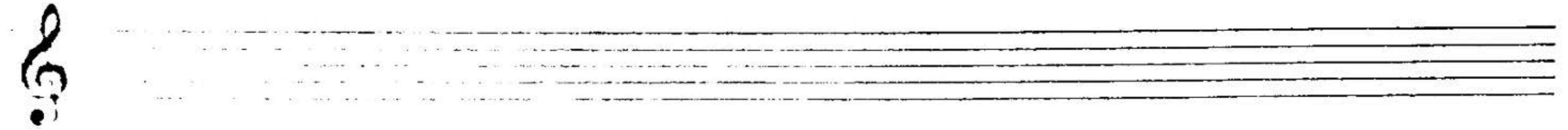
14. the relative harmonic minor of E^b Major



15. c# natural minor



16. the parallel melodic minor of B Major



For questions 17-21, notate the following intervals by adding a note ABOVE the given note. (1 pt. each)

P5	M3	P4	M6	m6	
17.	18.	19.	20.	21.	

For questions 22-26, notate the following intervals by adding a note BELOW the given note. (1 pt. each)

M7	m3	m2	m7	M2	
22.	23.	24.	25.	26.	

For questions 27-33, write the following triads and seventh chords in root position (each given note being the root of the chord) (1 pt. each):

minor triad	Mm 7th chord	Major 7 th Chord	augm. triad	Major Triad	minor 7 th chord	fully dim. 7 th chord
27.	28.	29.	30.	31.	32.	33.