

Newark
Board of Education
Roger León, Superintendent

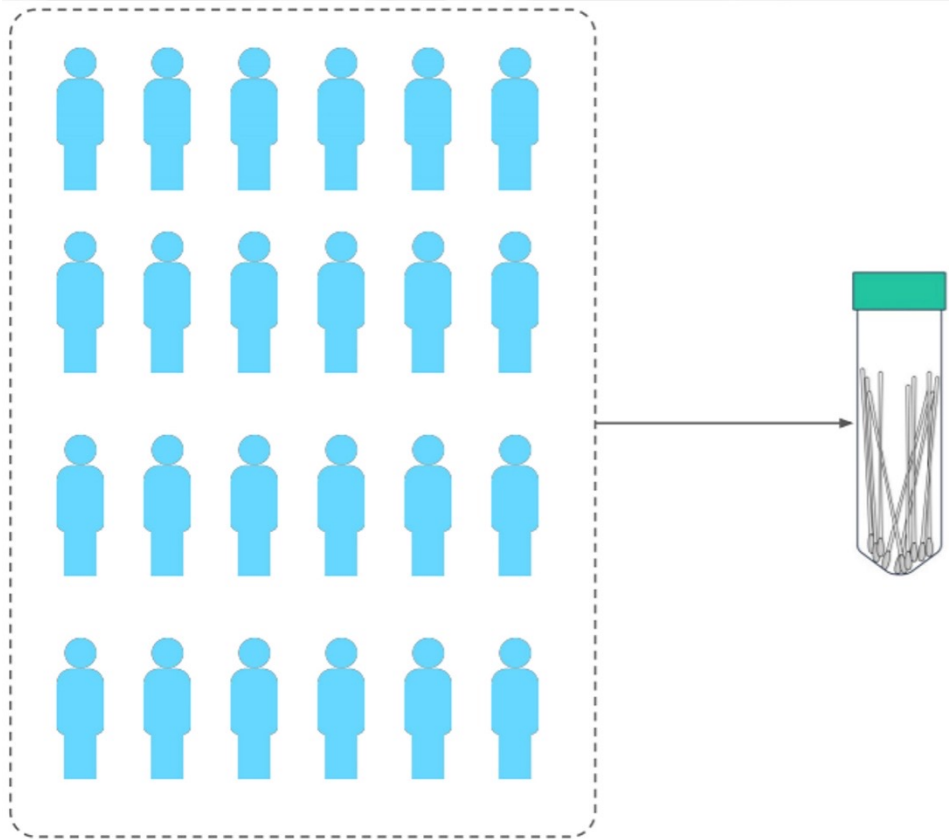
COVID-19 Pooled Testing for Schools

Overview for Families

WHY WE ARE SCREENING AT SCHOOLS?

1. To protect the health and safety of students and staff.
2. To help make informed decisions about operating schools and classrooms.
3. To help detect COVID-19 cases even when students and staff do not exhibit symptoms.

WHAT IS “CLASSROOM POOLING”?



With classroom pooling, an entire classroom can be tested using a **single** molecular test for SARS-CoV-2.

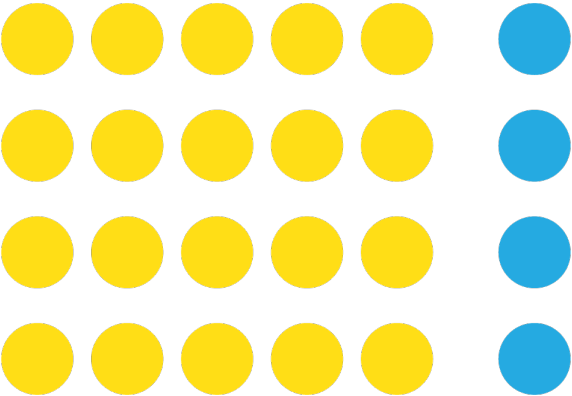
This dramatically reduces the cost and operational logistics of surveillance testing in K-12 schools.

Schools and the district will have the data needed to decide whether to keep schools or buildings opening.

HOW DOES IT WORK?



1. The tube is placed open on a desk or table, in a coffee cup or other stand that keeps it upright.

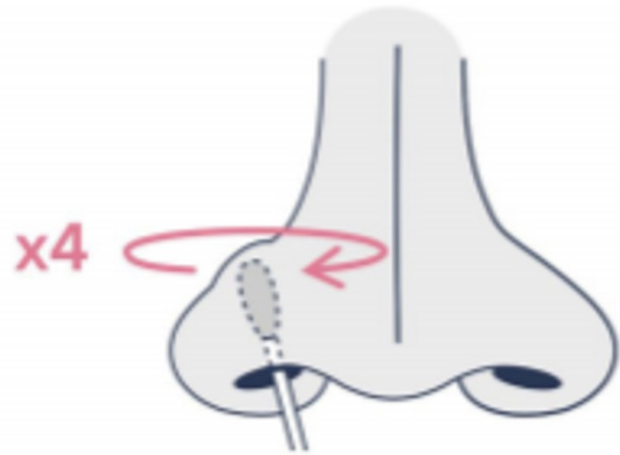


2. Everyone in a classroom receives a sealed nasal swab. A small group (about 3-5) is asked to swab themselves while a teacher observes. After they place their swabs in the open tube, the next group is called. The whole process takes 10-15 minutes for a classroom.

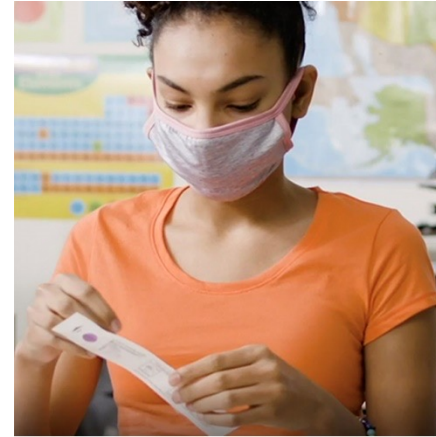


3. The tube is capped, sterilized with an alcohol wipe, and returned to the Test Supervisor for registration and shipment.

HOW DOES IT WORK?



Lower nasal (anterior nares/AN) swabs are painless and easy to self-administer.



NASAL SWAB SELF COLLECTION FOR POOLING TEST TAKER PROCEDURE

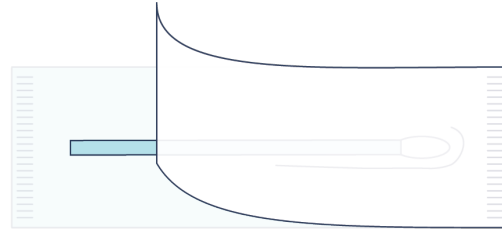
1.



Clean your hands.

Wash your hands or use hand sanitizer.

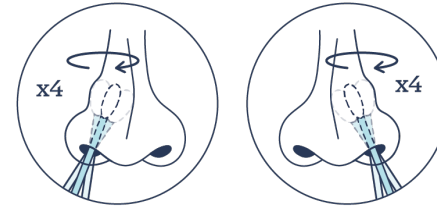
2.



Open the swab.

Peel the wrapper open like a packet of string cheese. Be careful - don't touch the cotton tip!

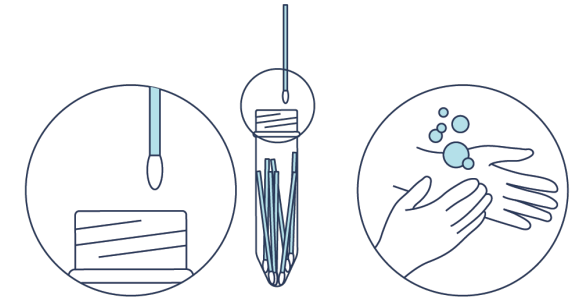
3.



Swab your nose.

Put the cotton tip into one nostril. Be gentle and stop when you feel push-back. Rub the swab around your nostril in a circle 4 times. Make sure the cotton tip touches the inside of your nose the whole time. Count, "1, 2, 3, 4 - switch!" Then do the same in your other nostril.

4.



Put the swab in the tube.

Carefully place the swab in the tube. Booger side down, not up! And be sure not to touch the tube. Then, clean your hands. You're done! Woohoo!



LEARN MORE ABOUT THIS PROGRAM



www.nps.k12.nj.us/covid-19-resources/pooled-testing