

# **October Business Meeting**

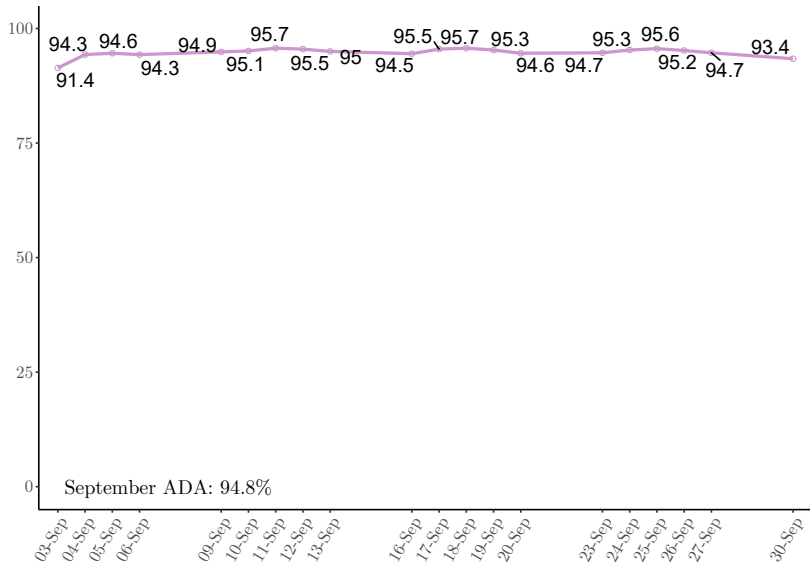
## **Superintendent's Report October 15, 2019**

**Roger León, Superintendent**

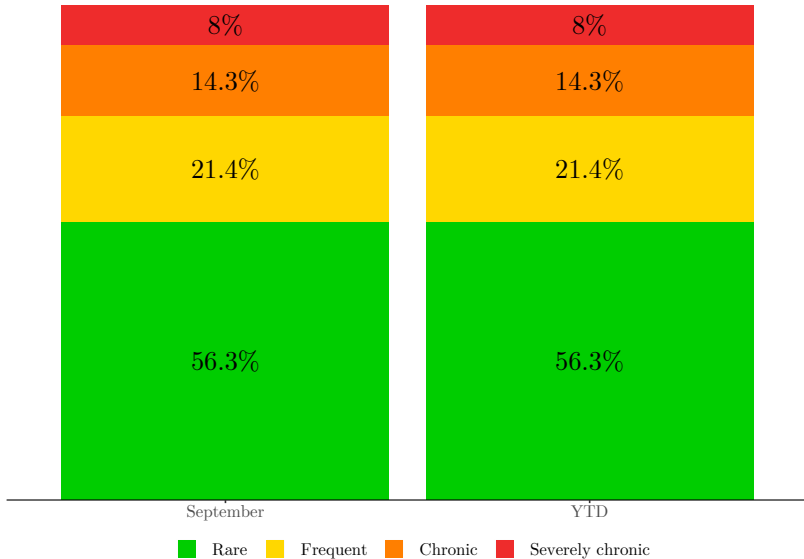
## Defining Absence Categories

Absence category	Proportion of days absent	September days absent	YTD days absent
Rare	$0\% \leq r < 5\%$	0 - 0.5 days	0 - 0.5 days
Frequent	$5\% \leq r < 10\%$	1 - 1.5 days	1 - 1.5 days
Chronic	$10\% \leq r < 18\%$	2 - 3.5 days	2 - 3.5 days
Severely chronic	$r \geq 18\%$	$\geq 4$ days	$\geq 4$ days

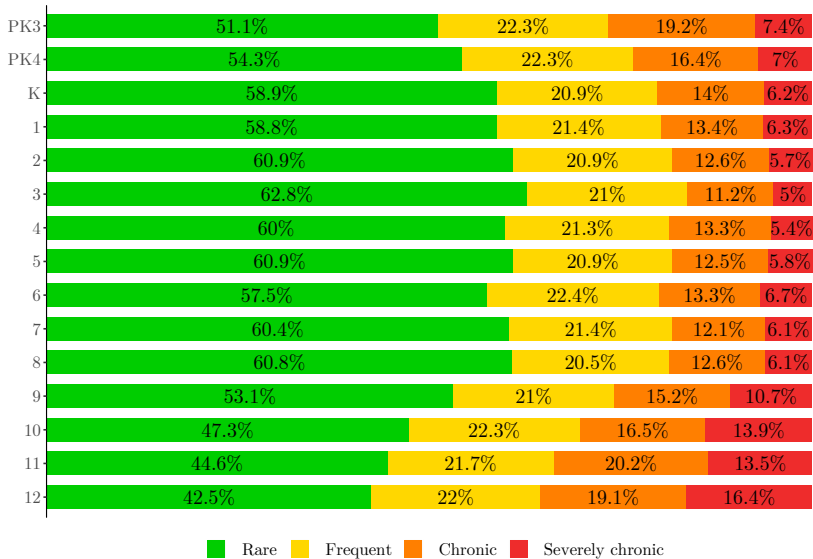
## Average Daily Attendance Rate



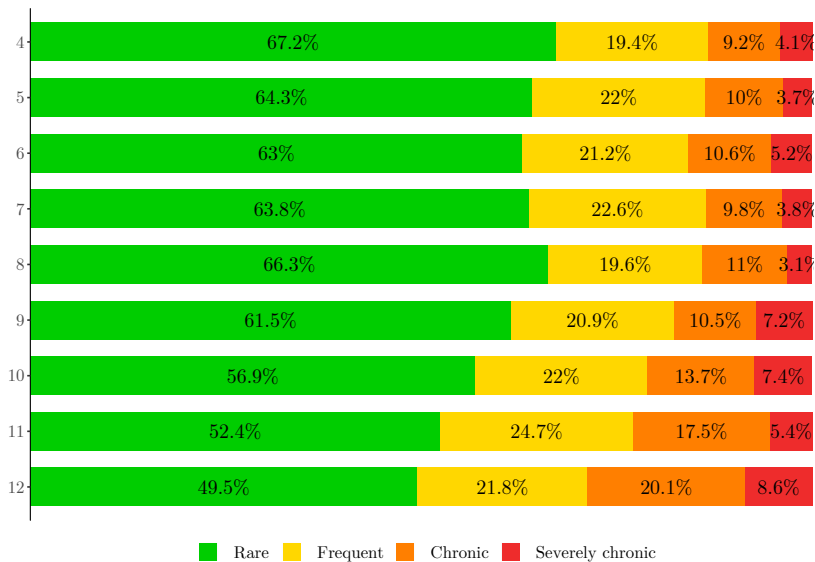
## Overall Absenteeism by Month by Category



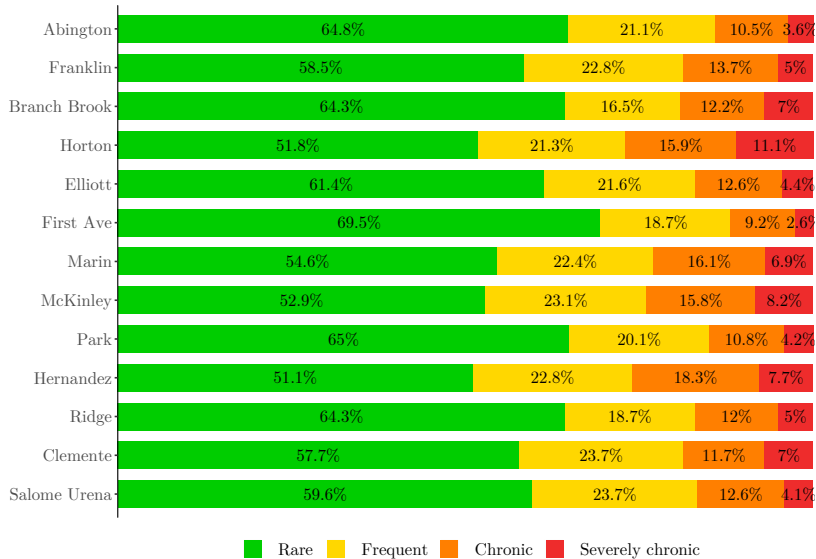
## Absenteeism by Grade by Category



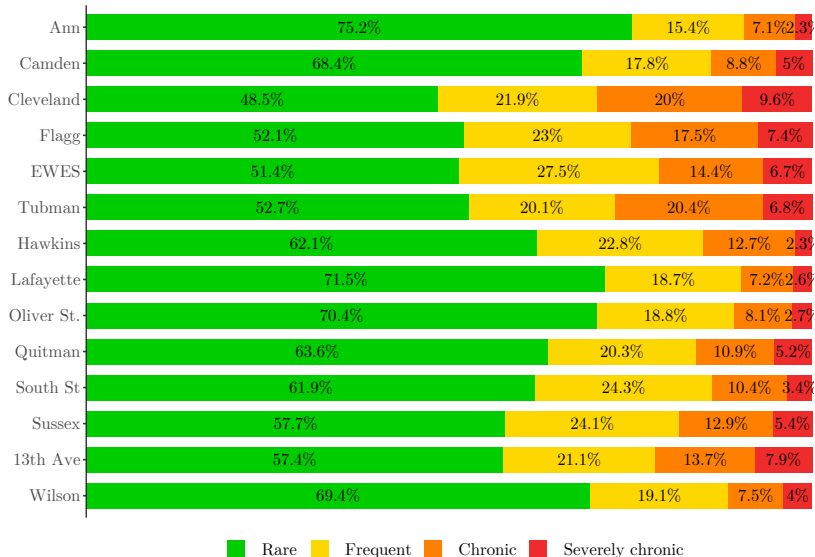
## Absenteeism by Grade by Category: NJSLA-Targeted Students



## Absenteeism by School by Category: North Ward Schools

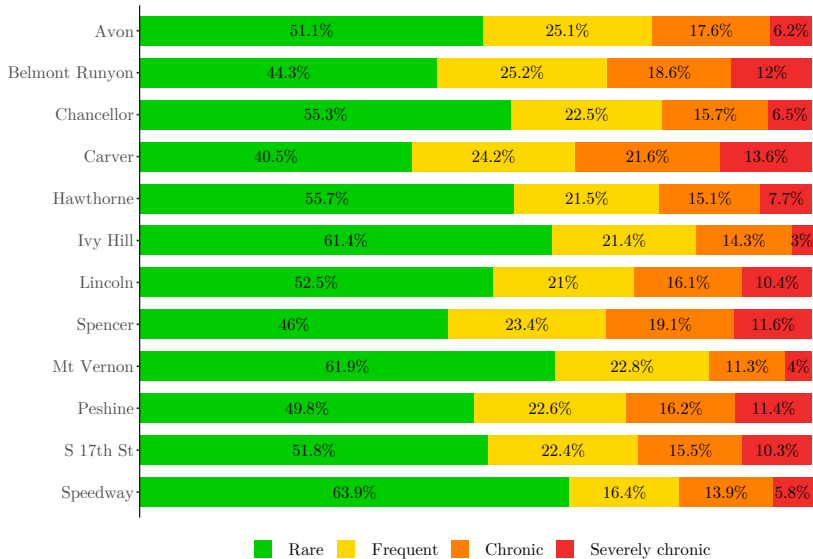


## Absenteeism by School by Category: East and Central Ward Schools

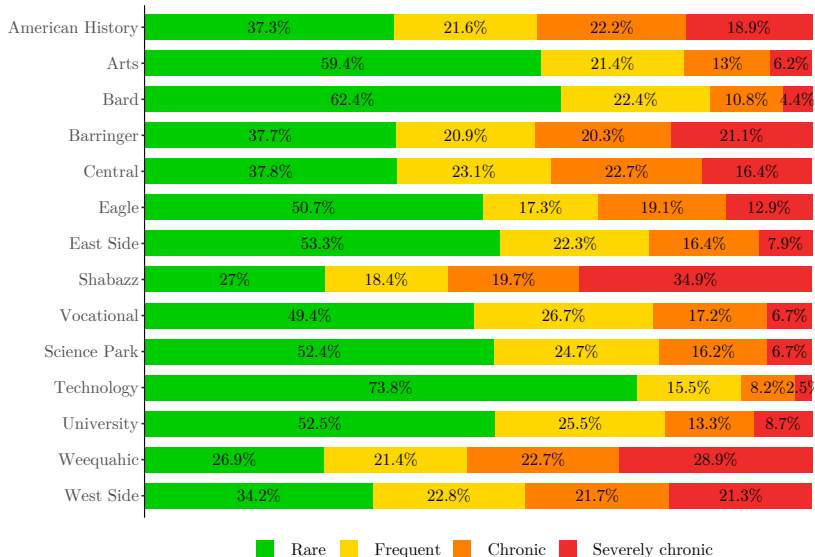




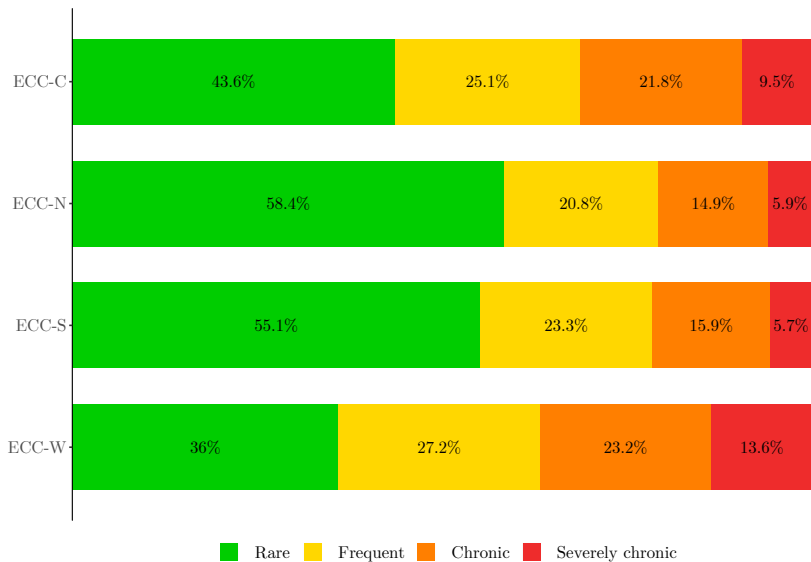
## Absenteeism by School by Category: South and West Ward Schools



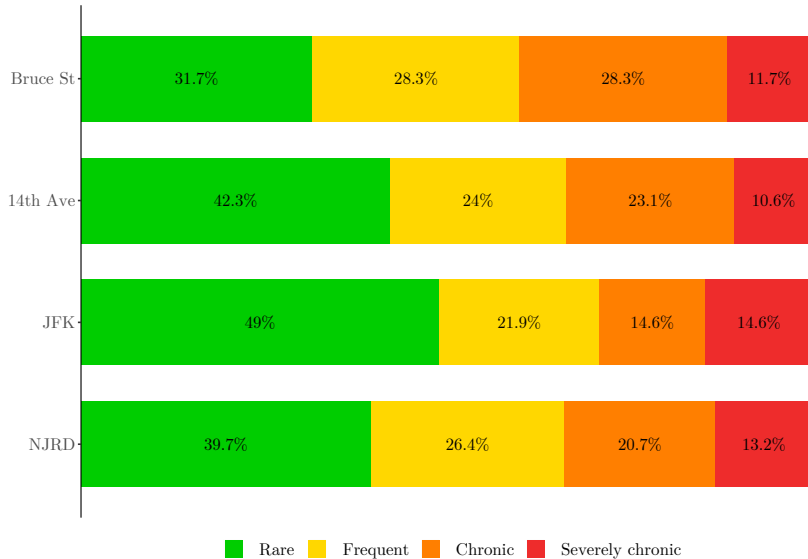
## Absenteeism by School by Category: High Schools



## Absenteeism by School by Category: Early Childhood Centers



## Absenteeism by School by Category: Specialized Schools



**TABLEAU UPGRADE  
&  
DASHBOARDS**

## EXTENDING THE REACH OF TABLEAU

Improved Performance and Data Security mean we can extend our reach beyond those with access last year.

### SY 2018-19

- Principals
- Vice Principals
- Attendance Counselors
- Requested Other School Staff
- Central Office Math and ELA

### Additional Staff for SY 2019-20

- Guidance Counselors
- Social Workers
- Department Chairs
- Teacher Coaches
- Clerk 3s
- All Relevant Central Office

## **DASHBOARD TOOLS AVAILABLE**

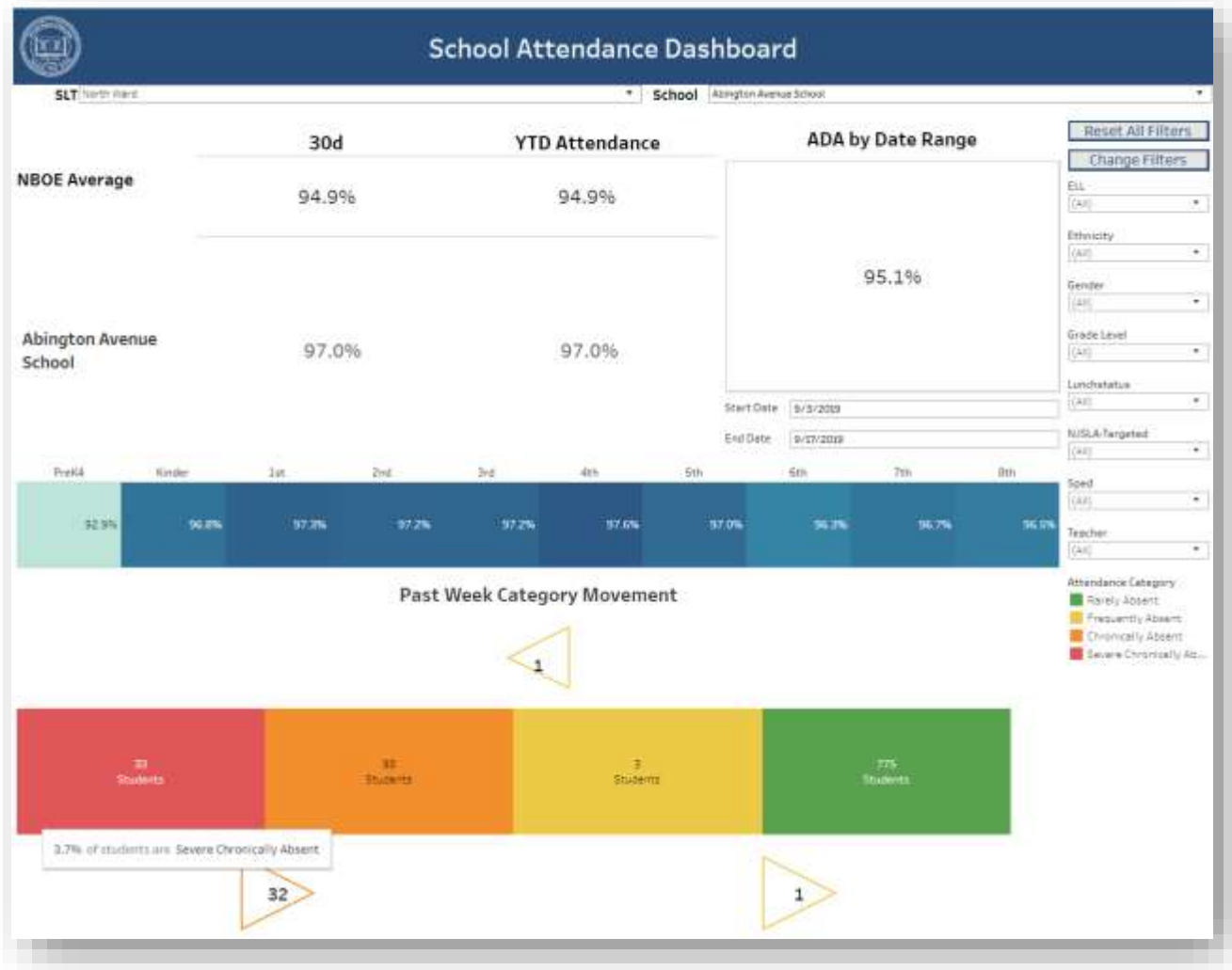
- Attendance Dashboard
- Interactive Assessment Report
- Cohort Graduation Tracker
- State Assessment Tracker
- Student Profile

## **NEW TOOLS FOR 2019-20**

- Updated Attendance Dashboard
- Student Profile
- School Summary Explorer (Beta Version)

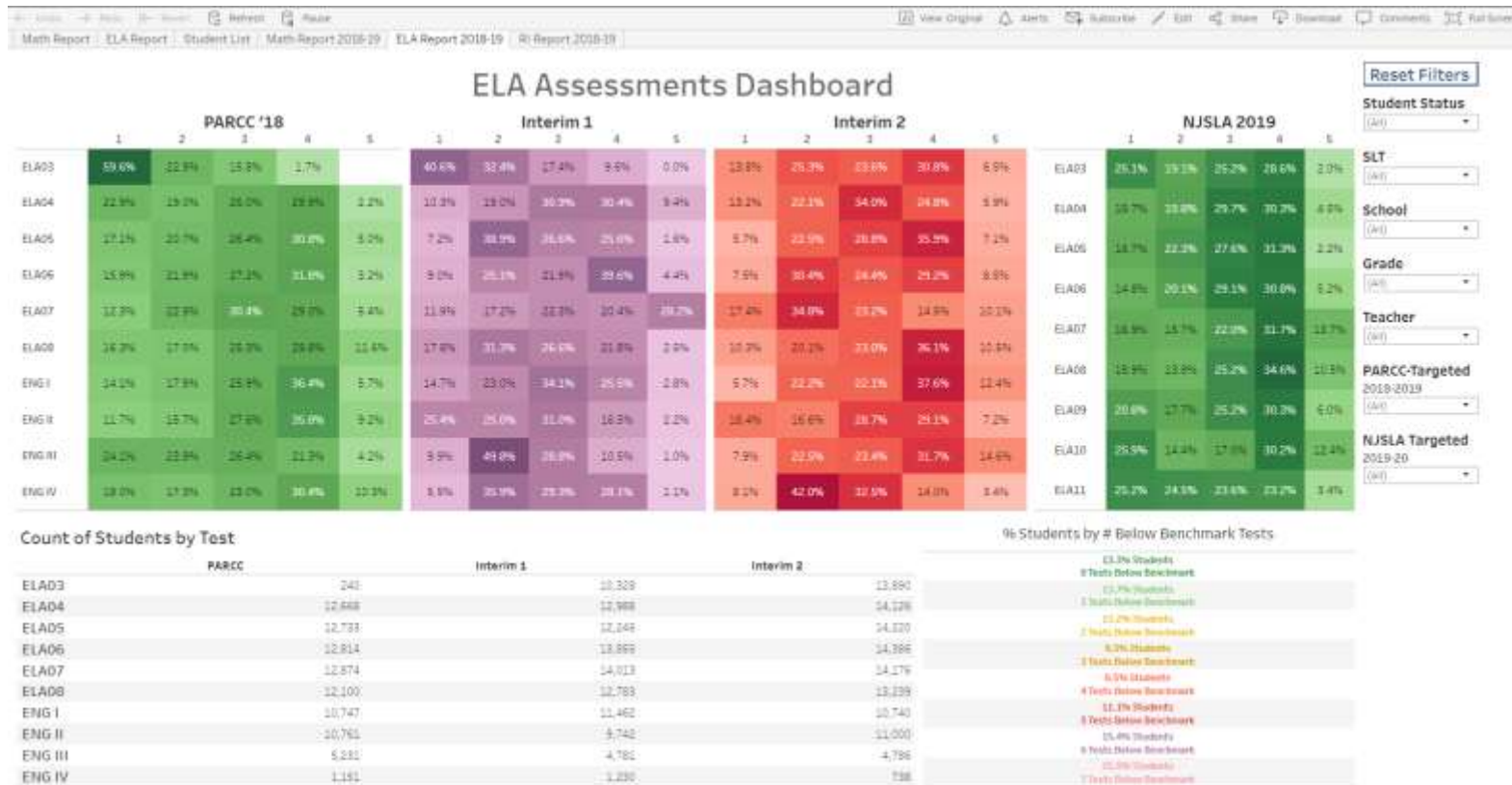


# ATTENDANCE DASHBOARD



- **Navigation and Filters** page to assist mobile use
- **District Overview** with SLT averages for all
- **School Overview** with ADA date range tool
- **Patterns and Categories** with daily and category attendance by grade
- **Identify Students** by selecting as student by name
- **Student List**

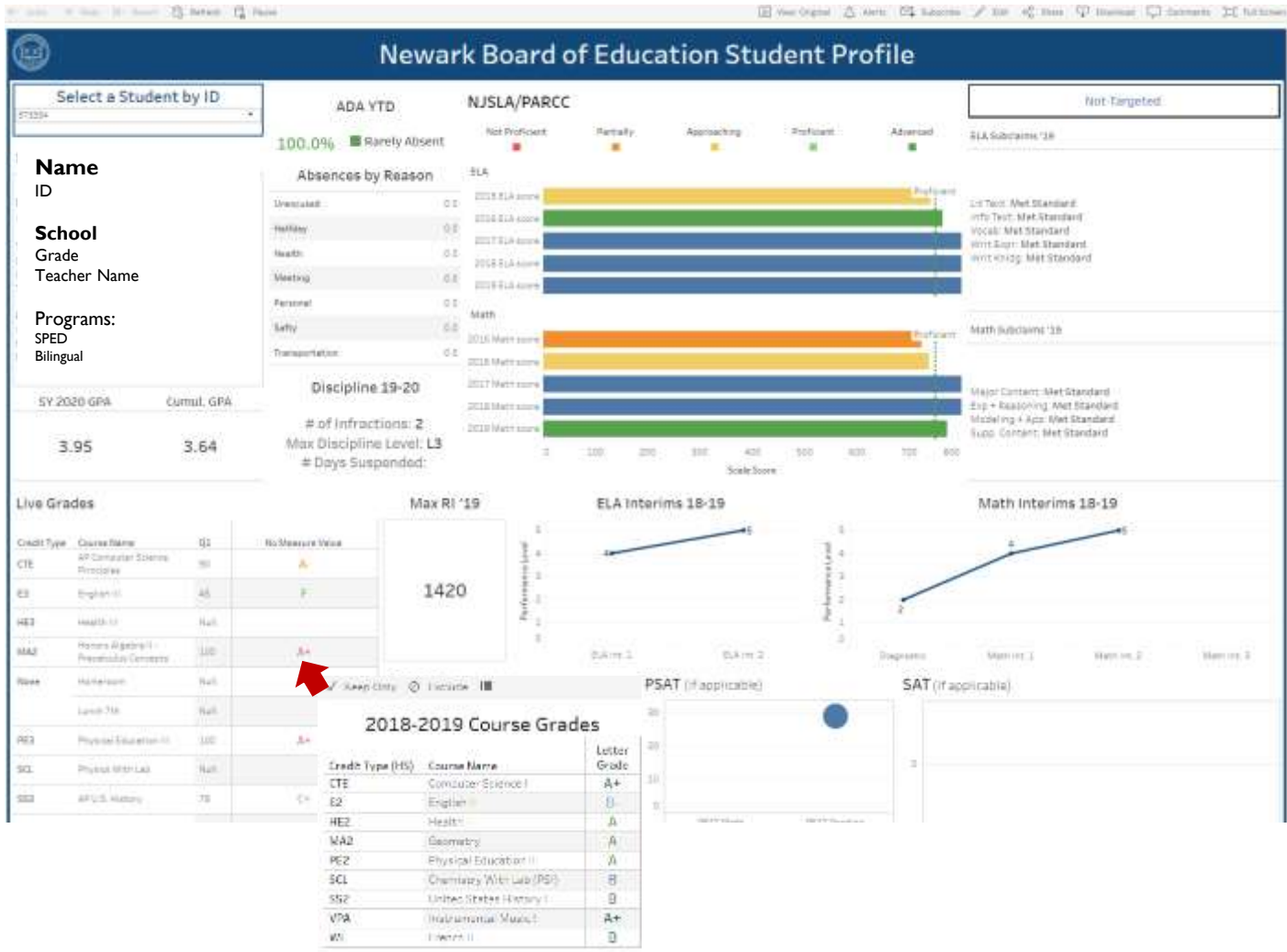
# MATH & ELA REPORTS



- All tests are added as scores become available, starting with NJLSA 2019
- Filter by demographics or by Targeted status
- Last year's assessments available on additional tabs

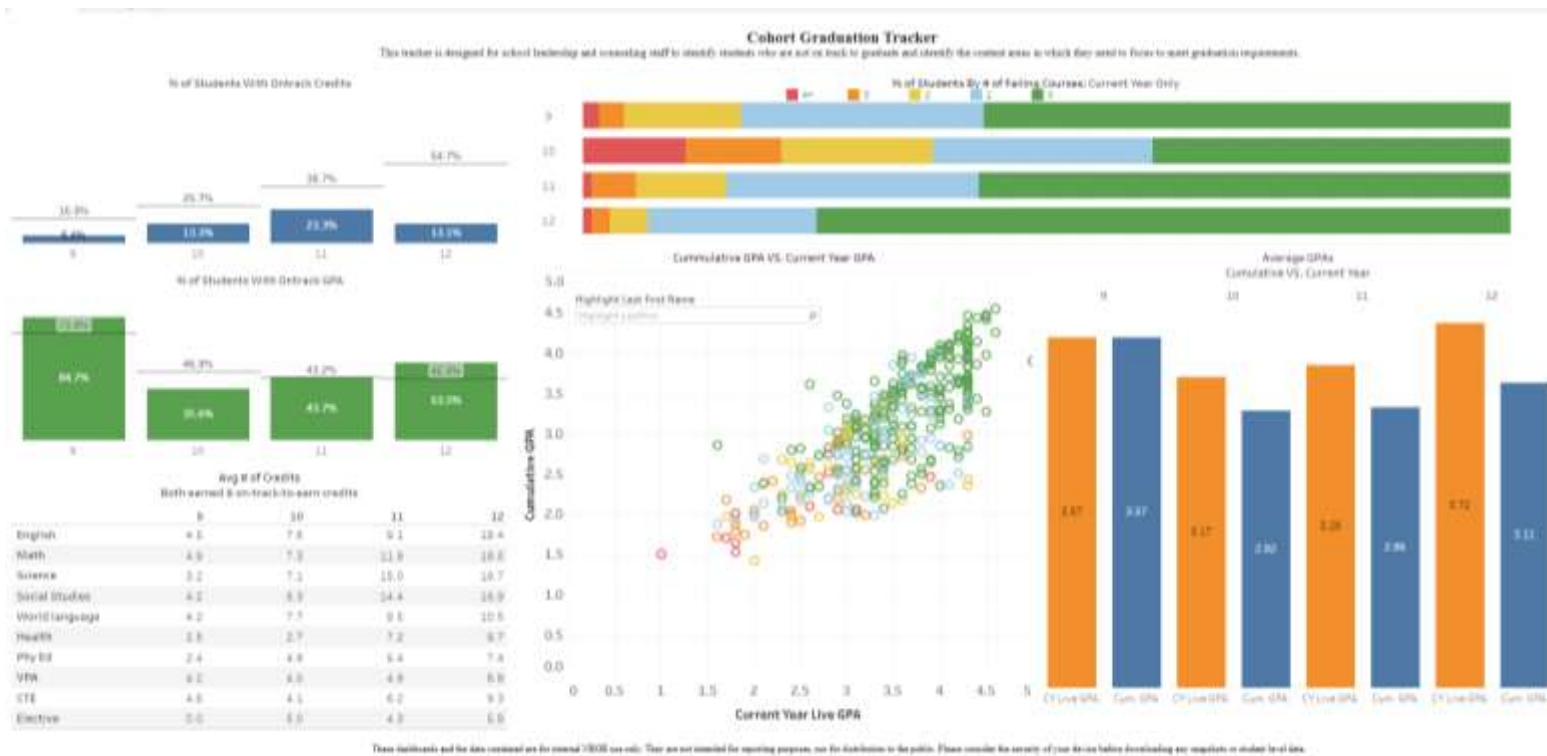
These dashboards and the data contained are for internal TDOE use only. They are not intended for reporting purposes, nor for distribution to the public. Please consider the security of your device before downloading any reports or student level data.

# STUDENT PROFILE



- First tool designed for Teachers!
- Multiple years of data available all in one place
- Hover over items for last year's information
- Export to PDF for printing

# COHORT GRADUATION TRACKER



- High Schools Only
- Compare students progress by grade or cohort
- Identify trends among subgroups
- Tailored to NBOE's standards for on track

## ROLLING OUT TABLEAU FOR TEACHERS

Pilot Schools from each SLT helping us begin the teacher roll out:

- University HS
- Shabazz HS
- Avon Ave
- Camden Street
- Hawkins
- Hawthorne
- First Ave
- Ridge Street
- Carver/Bruce

# TRAINING TEAM

## Teams

### Your teams

 Tableau User Training ...

#### General

Attendance Dashboard


Cohort Graduation Tracker

Interactive Assessment Report

Student Profile

 TEST-Tableau User Training ...



 Tableau User Training > General ...

Conversations Files Tableau Training Team Overview News and Events **New** General Tableau Training **New** General Tableau Quiz **New** FAQs **New** +



# Tableau Data Hub

## Tableau Training Team Overview

 von Salis, Miranda  
Senior Analyst

This Team is designed to give a brief overview of the Newark Board of Education Tableau Data Hub and provide training and resources to help users explore the available dashboards and tools.

In order to get access to the Tableau site, you might have been asked to complete the General Tableau Training. Please review the course PowerPoint under General Tableau Training, which provides an overview of what Tableau is, what kind of data the Data Hub offers, and how to login and navigate within the site. Then, complete the short quiz under General Tableau Quiz, which will trigger your authentication to the site.

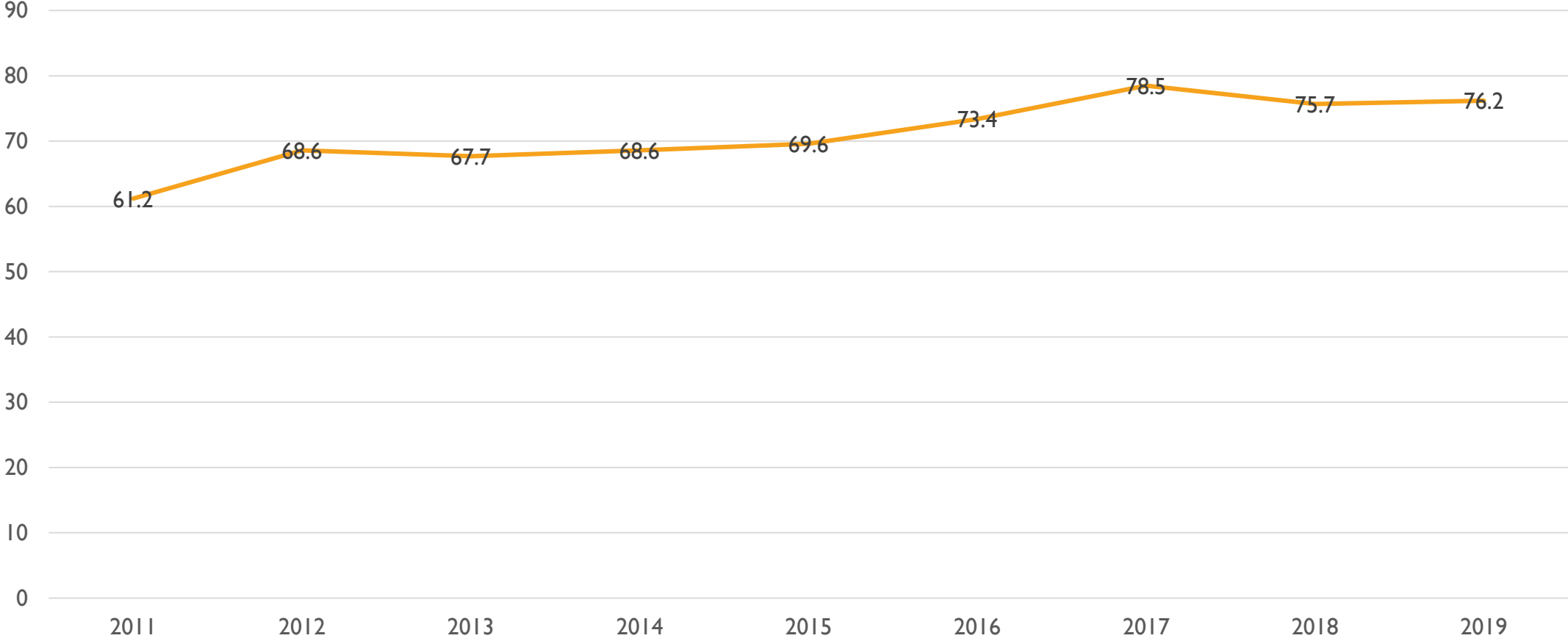
Feel free to post questions and comments under Conversations. A member of the Academic and Strategic Data Team will reply as soon as possible. Additional questions are answered under FAQs. Questions beyond Tableau or for larger data requests should be sent to [datarequest@nps.k12.nj.us](mailto:datarequest@nps.k12.nj.us).

## Quick Links

[Go To Tableau](#)

[Contact the Data Team](#)

# NBOE Four-Year Graduation Rate by Year



\* 2019 data is preliminary pending NJ DOE certification